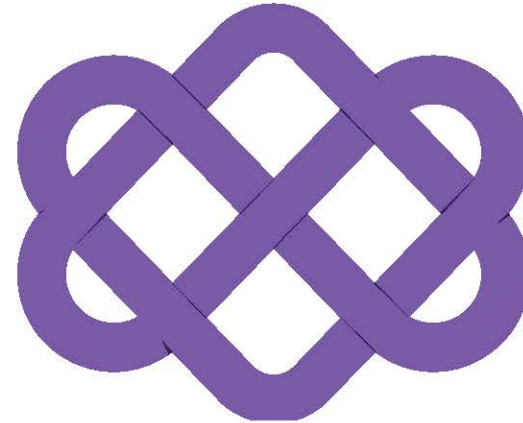


Mark Inglis

Head of Children's
Health, Care and
Justice Services



south ayrshire
health & social care
partnership

South Ayrshire

2016 Children Services Inspection report

“we were not confident that leaders were working effectively together . . . Too many young people aged 11-15 years were being accommodated away from home.”

“Reducing referral rates to the children’s reporter as a percentage of the population of young people aged 8-16 years provides a helpful indicator of the effectiveness of early intervention. In South Ayrshire were significantly higher suggesting that more needed to be done at an earlier stage to prevent difficulties from arising or getting worse”



Keeping South Ayrshire's Children in South Ayrshire and in their families or in family type care



Greatest number of children who became Looked After in South Ayrshire from this cluster

Equated to 53 Children over 3 years being Looked After

Totalling spend of **£3,704,382** or £1,234,794 a year

Included; Secure Care, External Residential care, Internal Residential care and external and internal Foster care

Family First now across all clusters - Aims

To enable our clusters to further improve outcomes for young people and **collaborate effectively** with colleagues deployed locally to work with them.



Improve our community leadership

- Building locality staff capacity
- Empower & enable local decision making
- Deploying resource to those with most need
- Implementing person centred solutions

Improve outcomes in wellbeing

- Improved attendance
- Reduced exclusion

- Improved engagement of most vulnerable groups

- Get the right help at the right time from the right person

Improving attainment

- Levels of literacy
- Levels of numeracy
- Qualifications at senior phase
- More high quality, sustainable, positive destinations.
- Including for our Care Experienced Young people



Thematic Priority - Families

Our South Ayrshire Family First model will allow the needs of South Ayrshire's children to be met through a joined-up, collaborative approach to children's services.

Integrative practice within and across agencies is key to locality working, and with this in mind we will use a tiered approach to intervention in order to plan for individual children, young people and families at the earliest opportunity. Putting Families First and working alongside local families, our GIRFEC approach will help us to identify the support each child or young person needs to help to improve their wellbeing.

Key Strengths

Increased Engagement/ Attendance

Strong Commitment from All Services

Collaboration Between Services – joined up planning

Community Planning

Better Understanding of Services' Roles

Sharing Information/Initiatives

Enabled to deal with low level issues quickly and meaningfully



Targeted feedback from Schools and Partners

Attending Family First Forums is having a positive impact on my relationships with people in other services? 100%

The Family First Forums support me to collaborate and join up with other services for the best outcomes of the pupil? 100%

“Greater understanding of the range of supports each service can provide. The centralised forum allows services to share new information on different initiatives in a timely manner and target relevant information towards each cluster. Better understanding of each services role in supporting families - who is the most relevant to support and why.”

“The partners around the table at Family First are now more aware of each others offerings and who are the right supports”.



We're committed to keeping the
#ThePromise



South Ayrshire are delivering
on the Promise;

***“to make sure every care
experienced child and young
person is safe, loved and
respected.”***



***“ We do everything humanly
possible to put the parents, children
and everyone naturally connected to
the children at the center of the
assessment and decision-making
and give them every opportunity to
come up with their ideas before we
offer/impose ours.”***

South Ayrshire Children and Young People's Services Plan

Supporting wellbeing, strong families,
caring communities

2023-2026



***“Strong Families, Strong
Communities: Supporting Wellbeing
through Whole Family Approaches”***



South Ayrshire

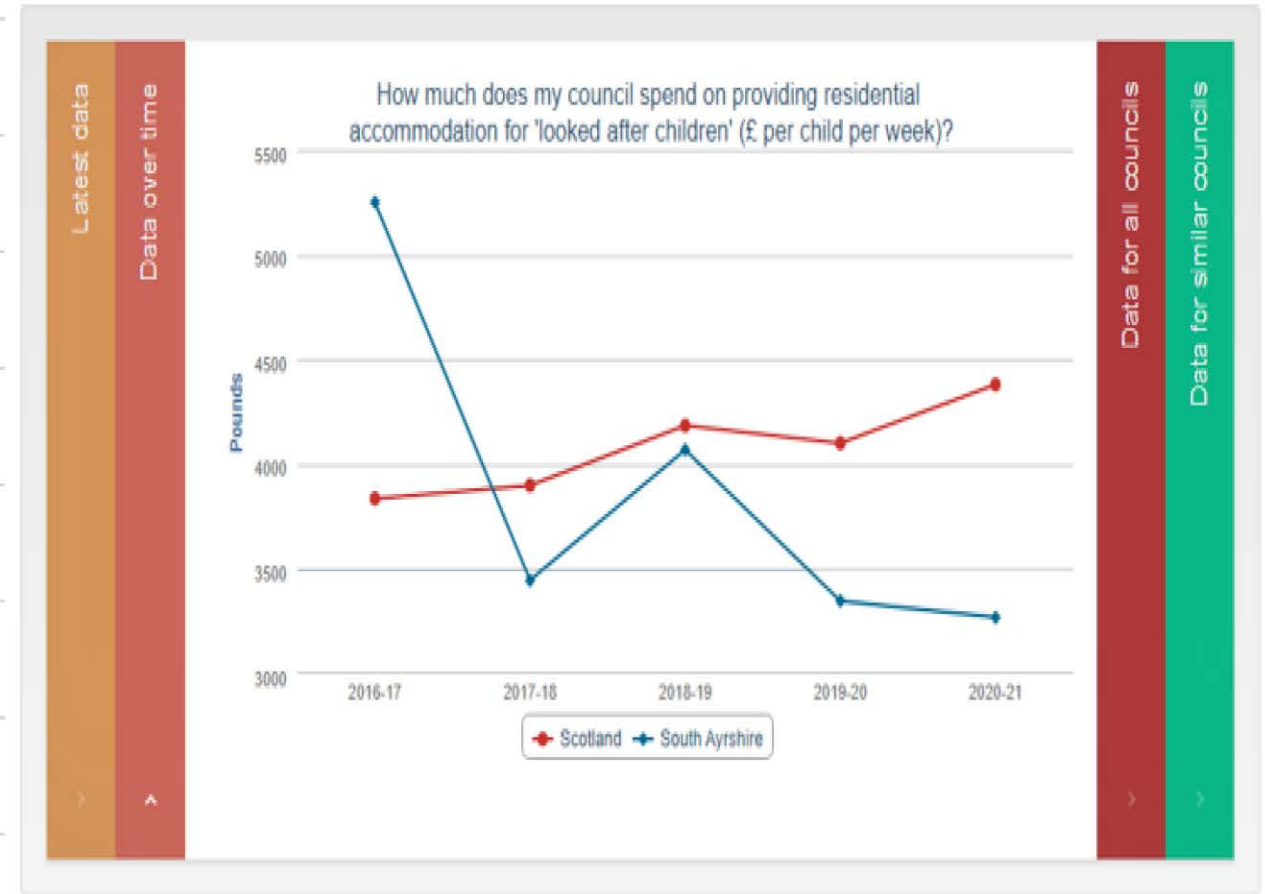
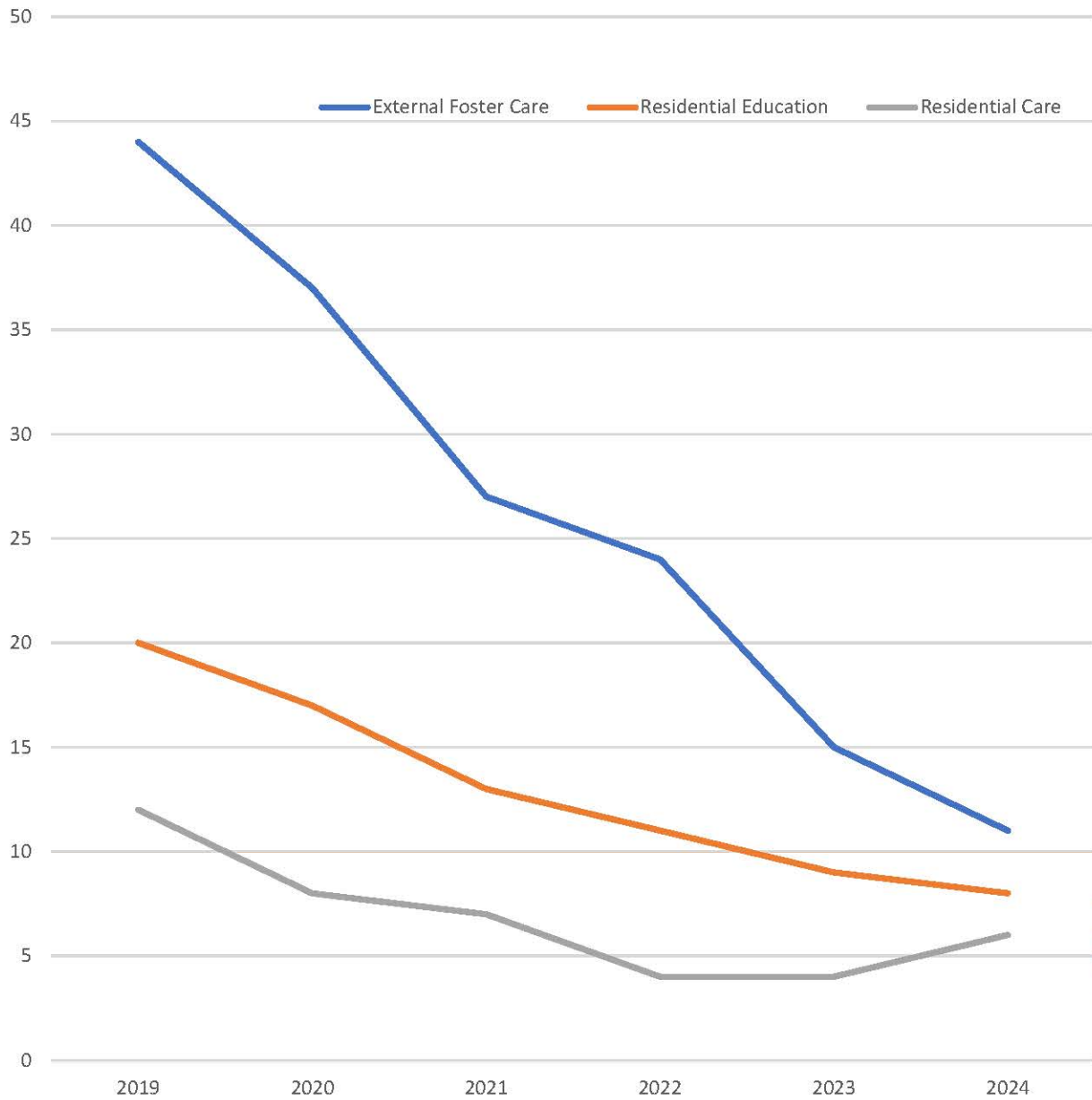
A changing culture

- SAC want to empower the people we come into contact with to be in control of their own lives, giving them every opportunity to come up with their own solutions before we offer or impose ours.
- We want SAC to become an organisation that learns from its mistakes and celebrates its successes, functioning as a learning organisation
- SAC want families to stay together where possible and if they cannot, for them to remain connected to their family, friends and communities that are important to them
- We want to practice in a Risk Sensible manner in SAC, demonstrating we respond proportionately to risk, recognising we will have to work with uncertainty

South Ayrshire Changing the Balance of Care 2019 - 2024

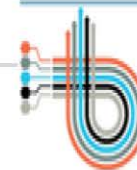


Out with Authority Placements decreased from 77 in Jan 2020 to 39 in Jan 2025, a decrease of 50%. Which equates to £3.785 million



Other data available in this theme

Other councils



Local Government Benchmarking Framework

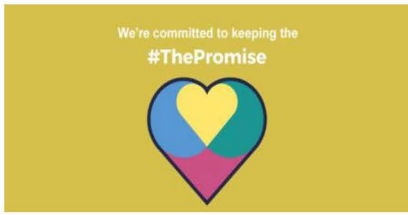
2022/23

SAC = £3,643

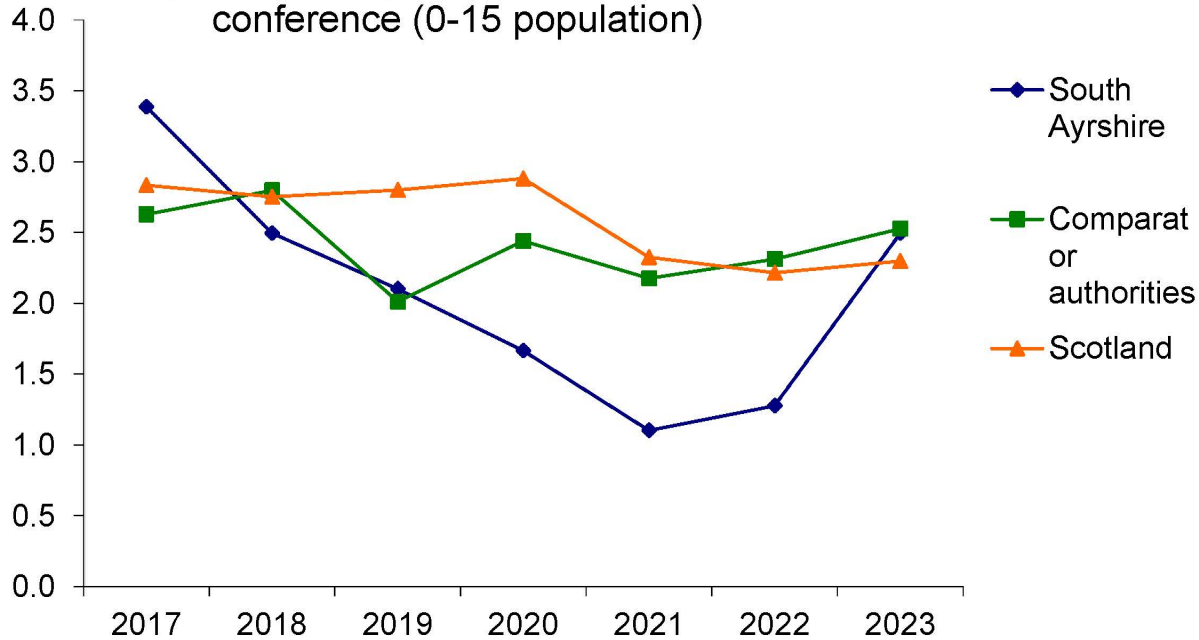
FG = 4,745

Scotland = £4,804



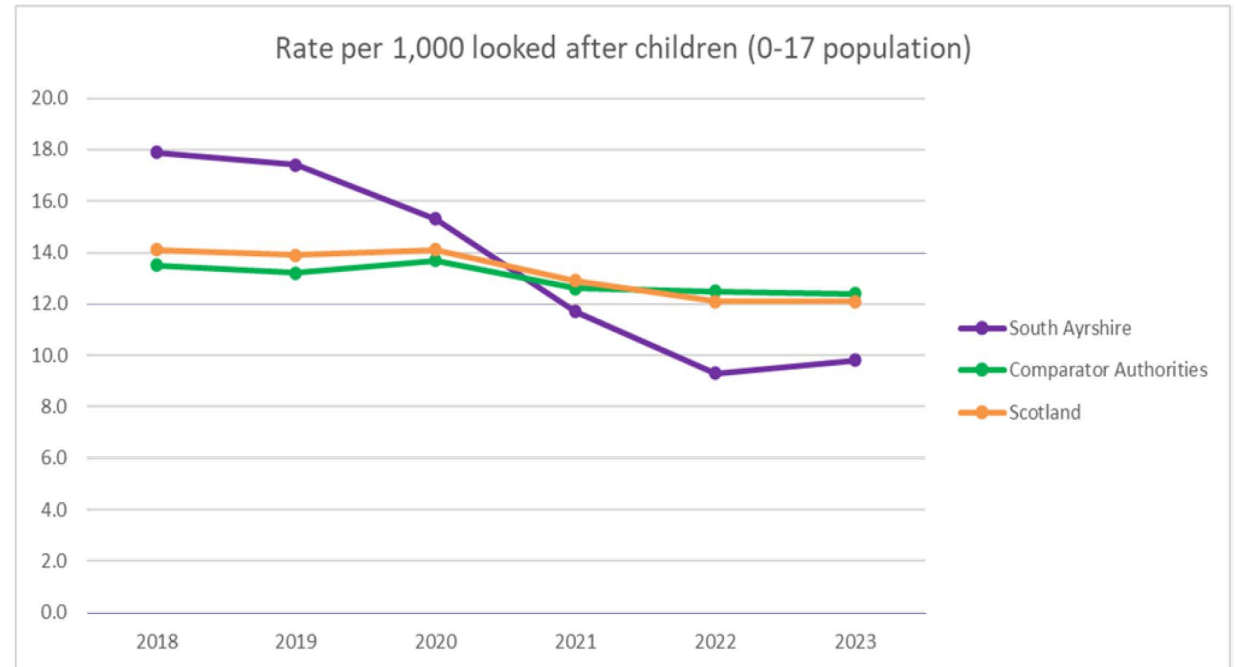


Rate per 1,000 registrations following a case conference (0-15 population)

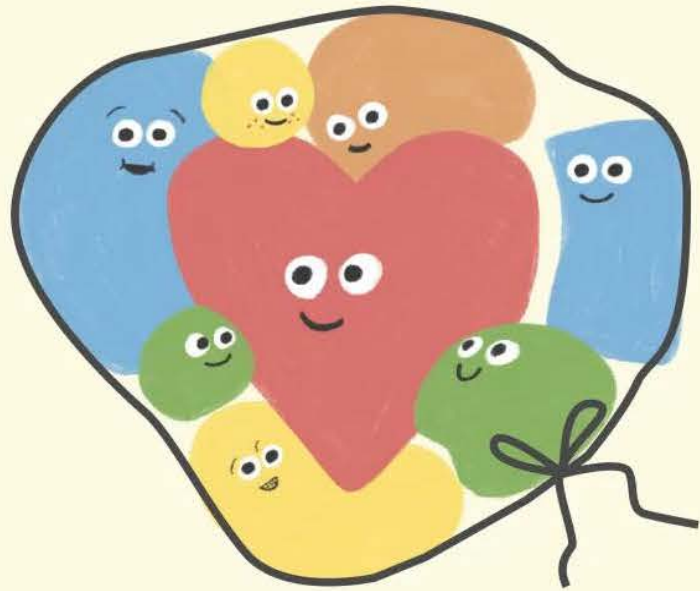


	2015	2016	2017	2018	2019	2020	2021	2022	2023
South Ayrshire	3.4	3.9	3.4	2.5	2.1	1.6	1.1	1.3	2.5
Scotland	3	3	2.9	2.8	2.8	2.9	2.3	2.2	2.3

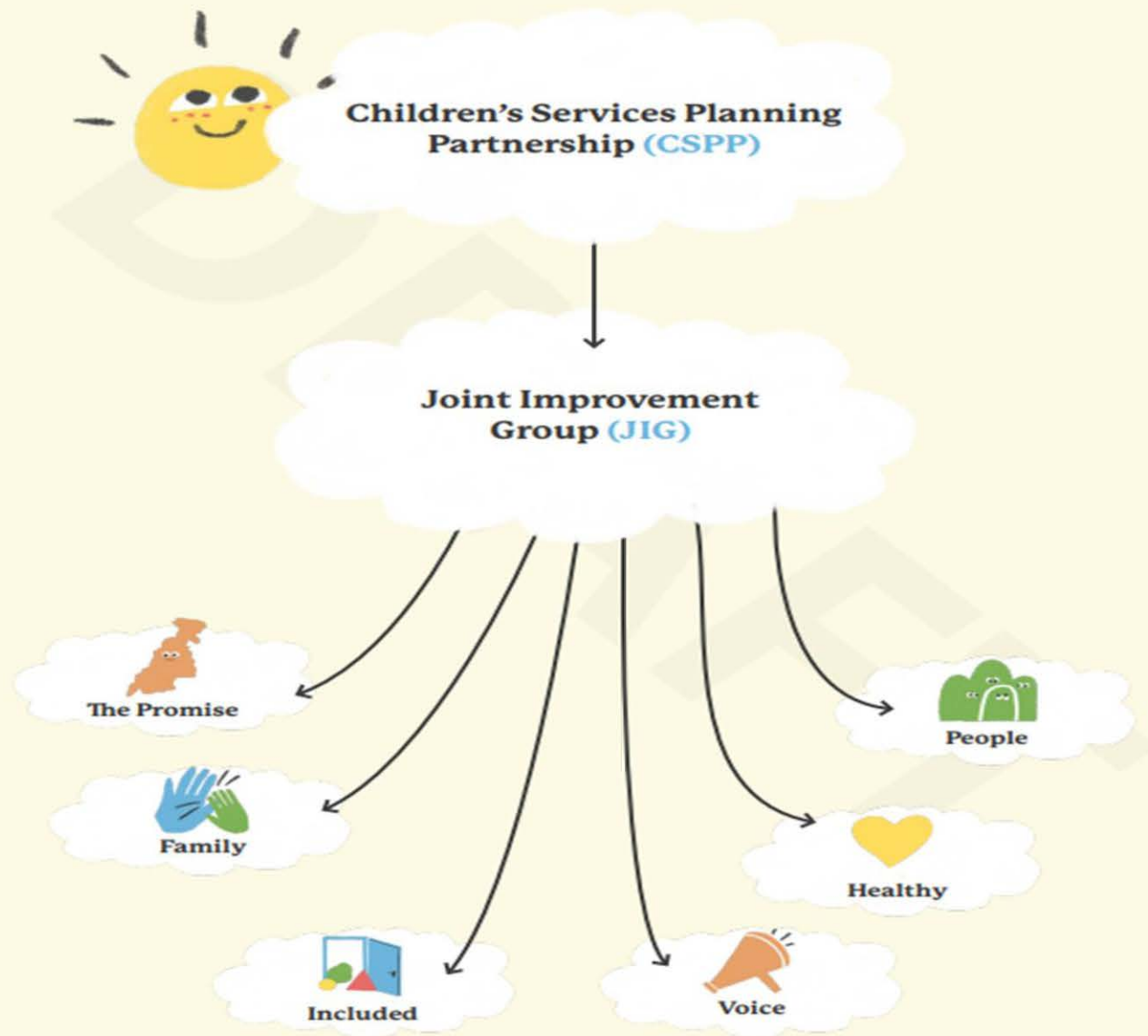
Rate per 1,000 looked after children (0-17 population)



Year	Number of Children	Rate per 1,000 0-17 population	Percentage Change in Looked After Children from 2017
2018	355	17.9	-4.1
2019	345	17.4	-2.8
2020	300	15.3	-13.0
2021	229	11.7	-23.7
2022	183	9.3	-20.1
2023	189	9.8	3.3
Overall 18-23			-48.5



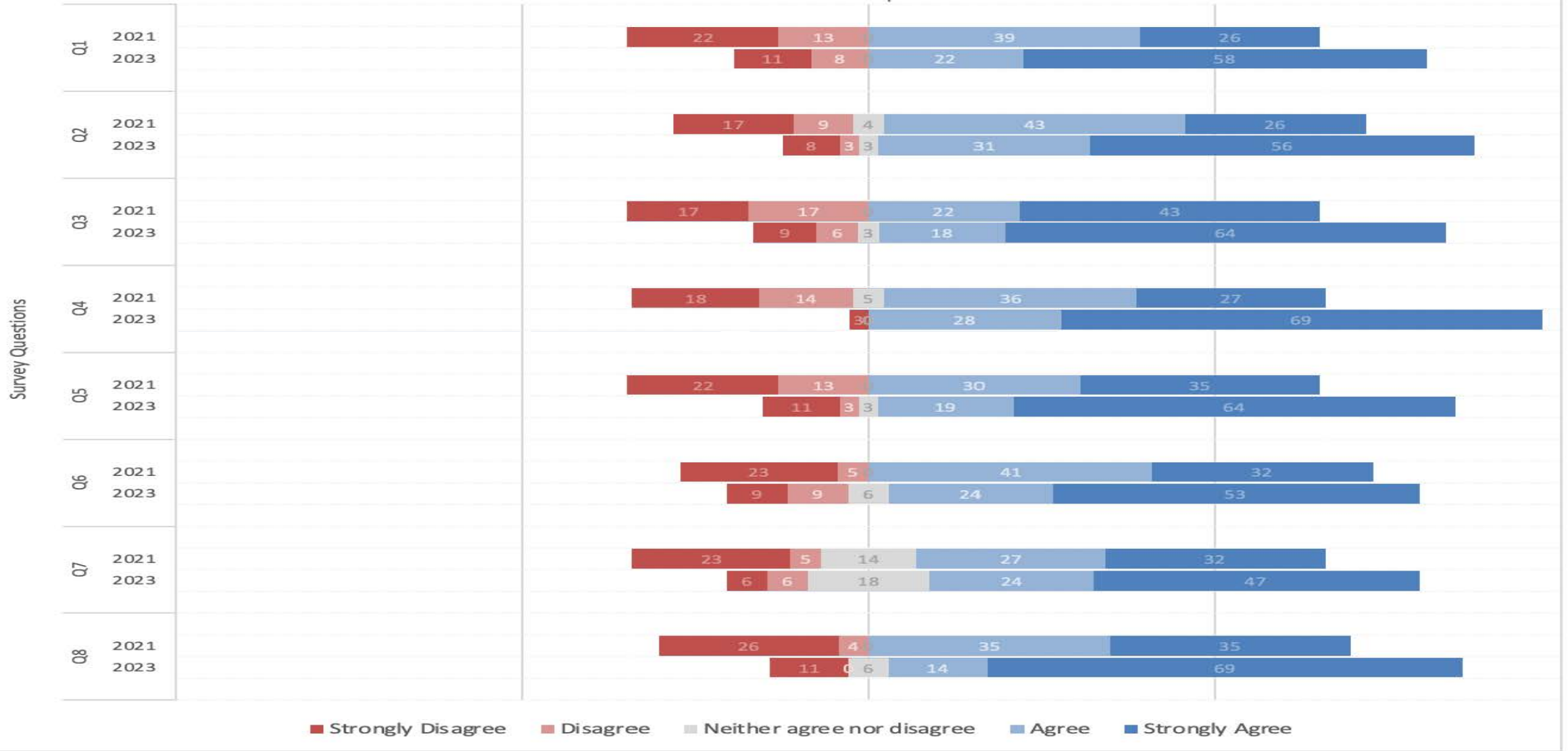
South Ayrshire Children and Young People's Services Plan



-  Moving our resources **“upstream”** to reinforce a prevention approach, as we shift from managing crisis to supporting whole families at the earliest point they indicate extra help is needed.
-  **Integrating services** further in South Ayrshire by supporting our practitioners to work together in **“Family First”** locality teams, allowing opportunity for connection and reflection to positively impact outcomes for whole families.
-  Holding **children and young people’s voice** at the heart of services by undertaking a rights-based approach to planning for maximum impact.

Parent's Survey results - 2021 vs 2023

% of all responses



THE LIBERATEE METHOD

Rethinking Public Services

“We need to stop trying to improve services.

If you start with services as your focus for change, you end up with services.

People don't want services, certainly not those that have a lot going on in their lives.

People want support, relationships, practical help.

People want to be understood”

Mark Smith 2023