



Aberdeenshire Child Protection Data

Jacqueline Duffin, CPC Lead Officer

Lindsey Anderson, Project Manager (Children's Social Work Services)



Area 6,339km²

Population in 2022 - 263,900

Increase in households by 10.6% since 2011

17% of the population are children and Young People (national average 15%)

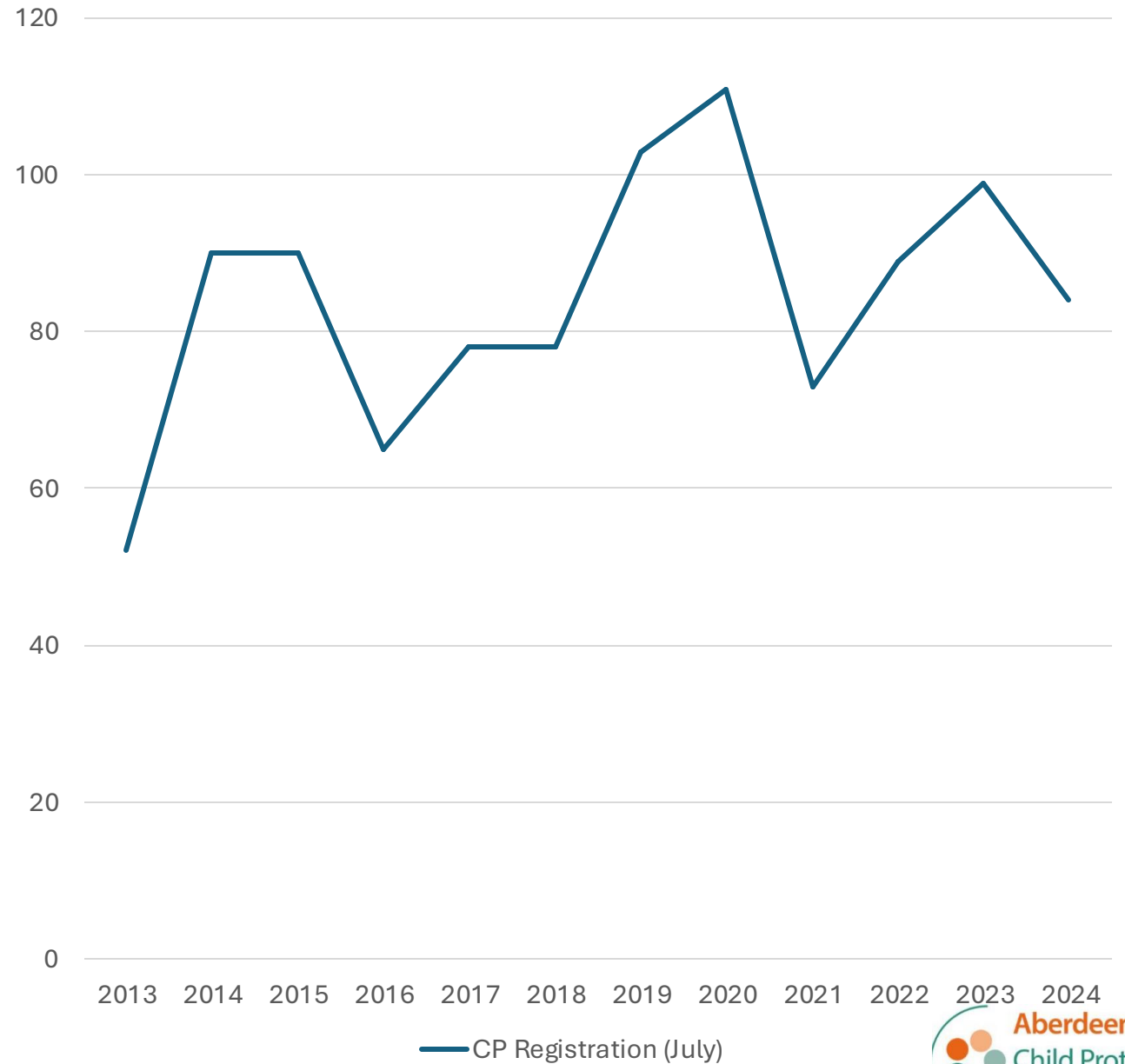
1 Health board (shared)

1 Police Division (shared)

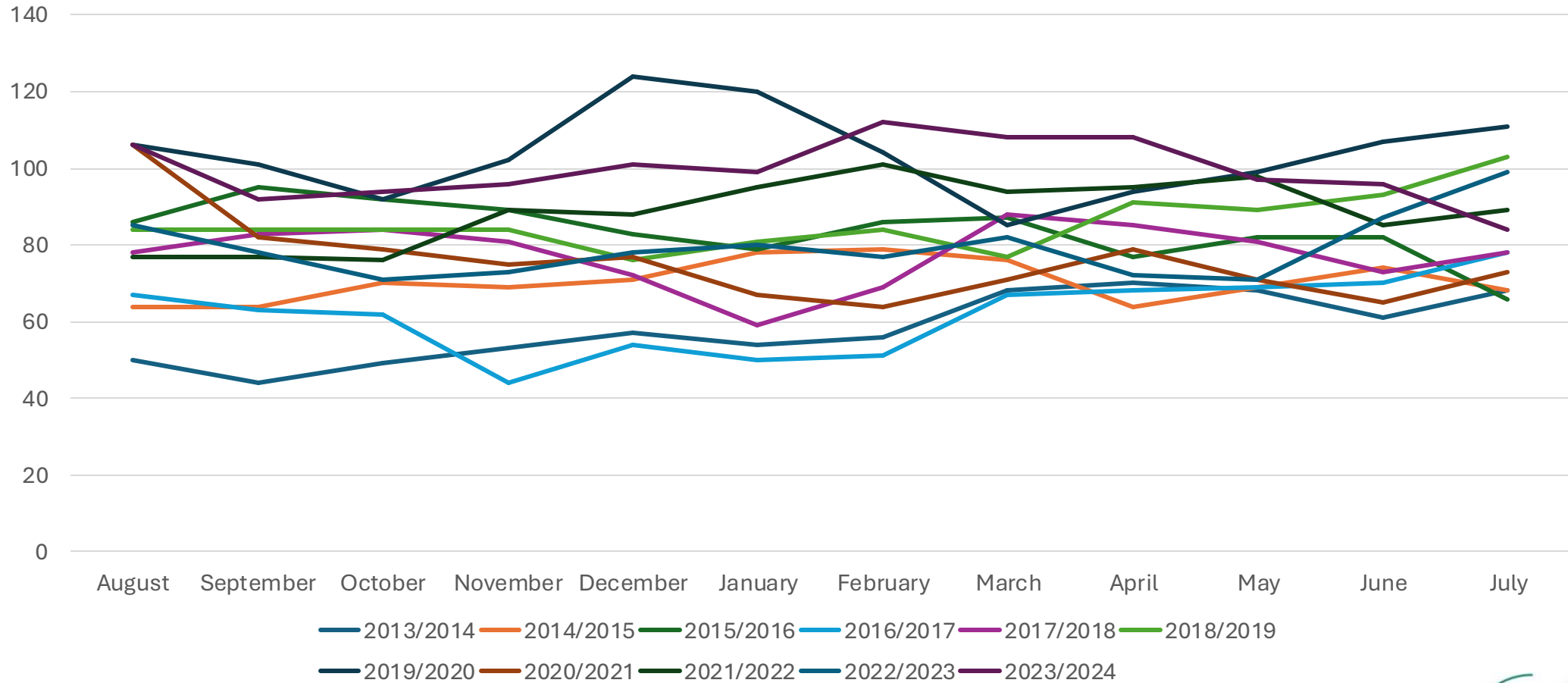
12 Children and Family Social Work Teams



CP Registration Data 2013-2024



Ten Years of Data



Understanding our Child Protection Data



What we know and what we do

Complex landscape – increasing population, multiple large sibling groups, pockets of poverty, economy linked to oil and gas

Joint inspection of services for children and young people at risk of harm – very good. GIRFEC approach is strong and present

Data and Self Evaluation Subgroup minimum dataset embedded – wide multi-agency representation to understand qualitative data.

More datasets to be added and questioning how we can gather more complex data

Workforce views – multi-agency workshops to consider the CPC Improvement Plan and L&D Survey

Hidden issues – Child and Young People Mental Health, Exploitation.

Now

Challenges

- Stretched services
- Social Work and Health hard to recruit
- High number of children with additional support needs
- Increase in parental Mental Health
- Increase in Child Mental Health
- CAMHS with long waiting lists

Improvements

- Bairns' Hoose Pathfinder – evaluation of the Child Protection process from start to finish
- Reconvened IRDs
- Initial concerns at IRD to CP Registration

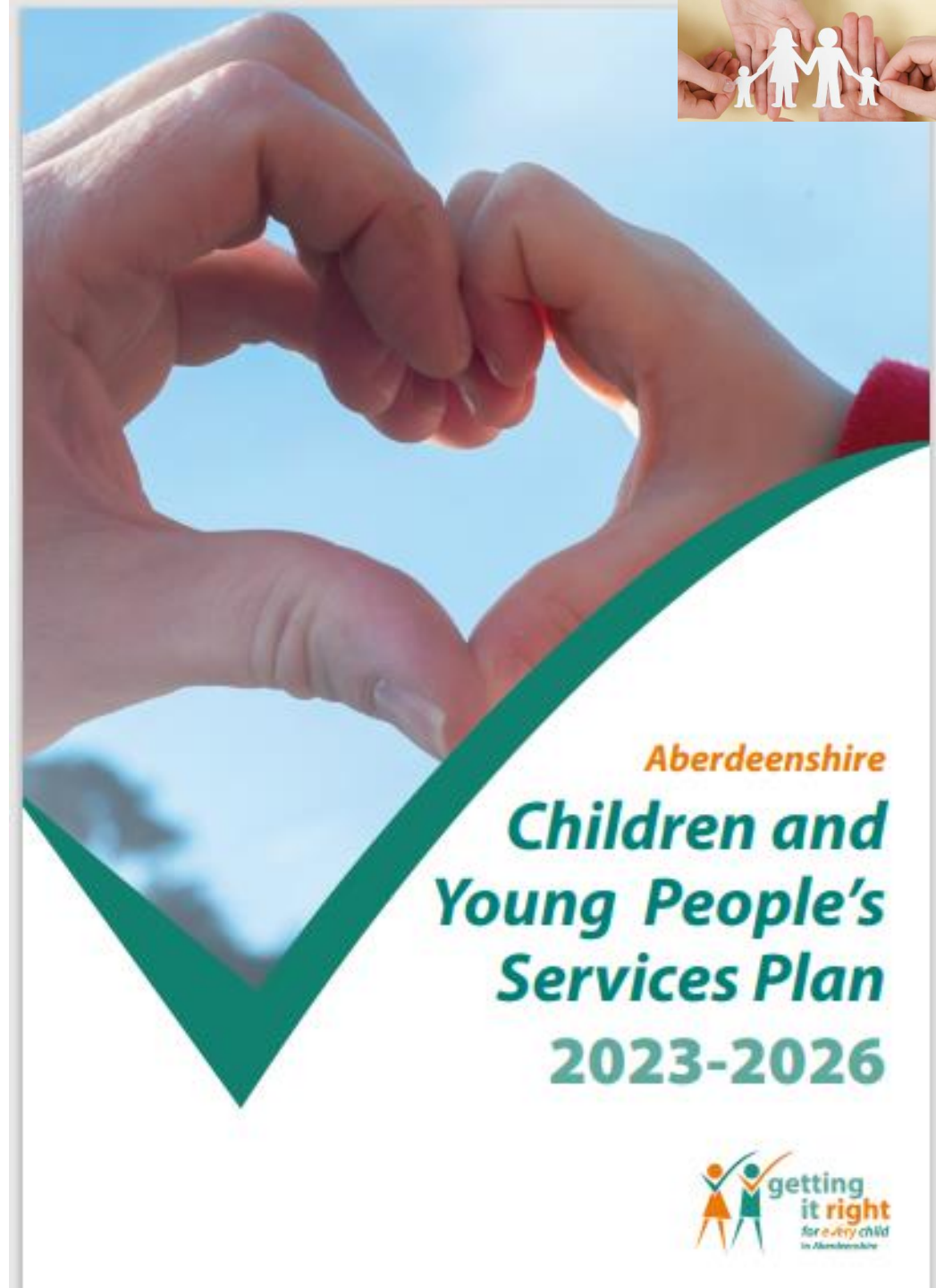


Our Care Experienced Children and Young People



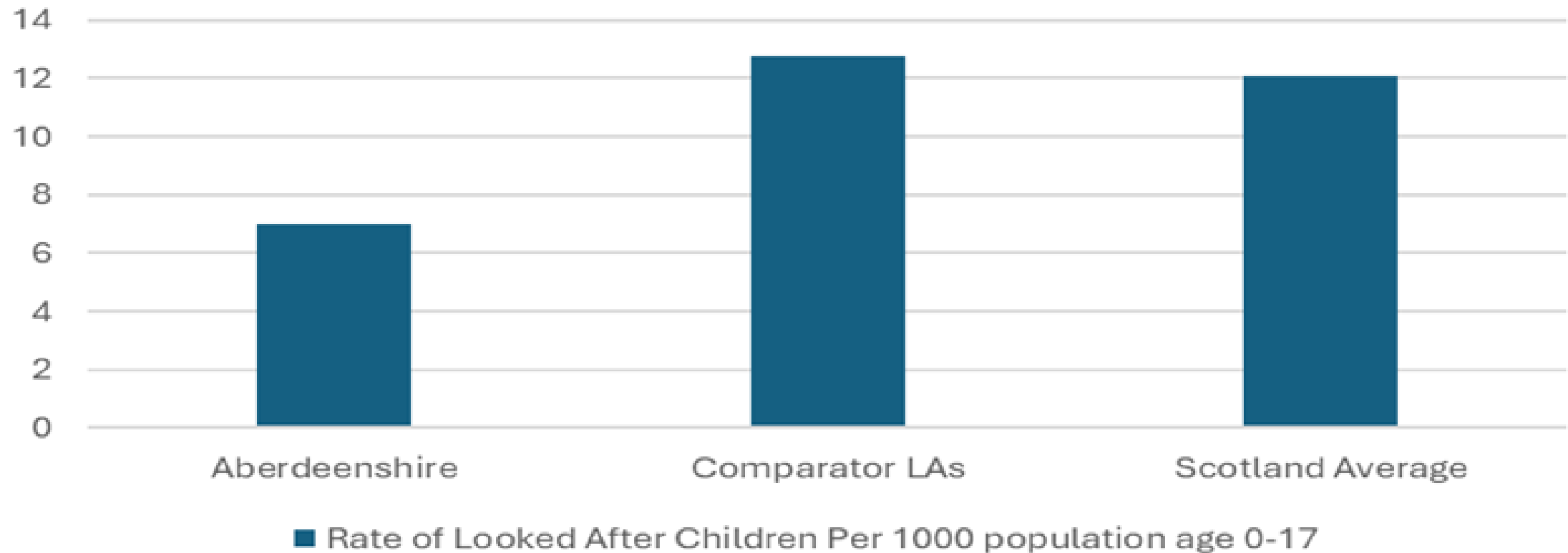
Engaging with Care Experienced Children, Young People and their Families

- **Aberdeenshire Children and Young People's Service Plan 2023 -2026** - Children's rights and participation group, including our Young People's Organisation and Campaigning group for care experienced young people
- **Upholding our Promise – Corporate Parenting Plan** – Bright Spots, infant voice, brothers and sisters
- **Continuous Improvement** - our child and young person assessment, fostering review



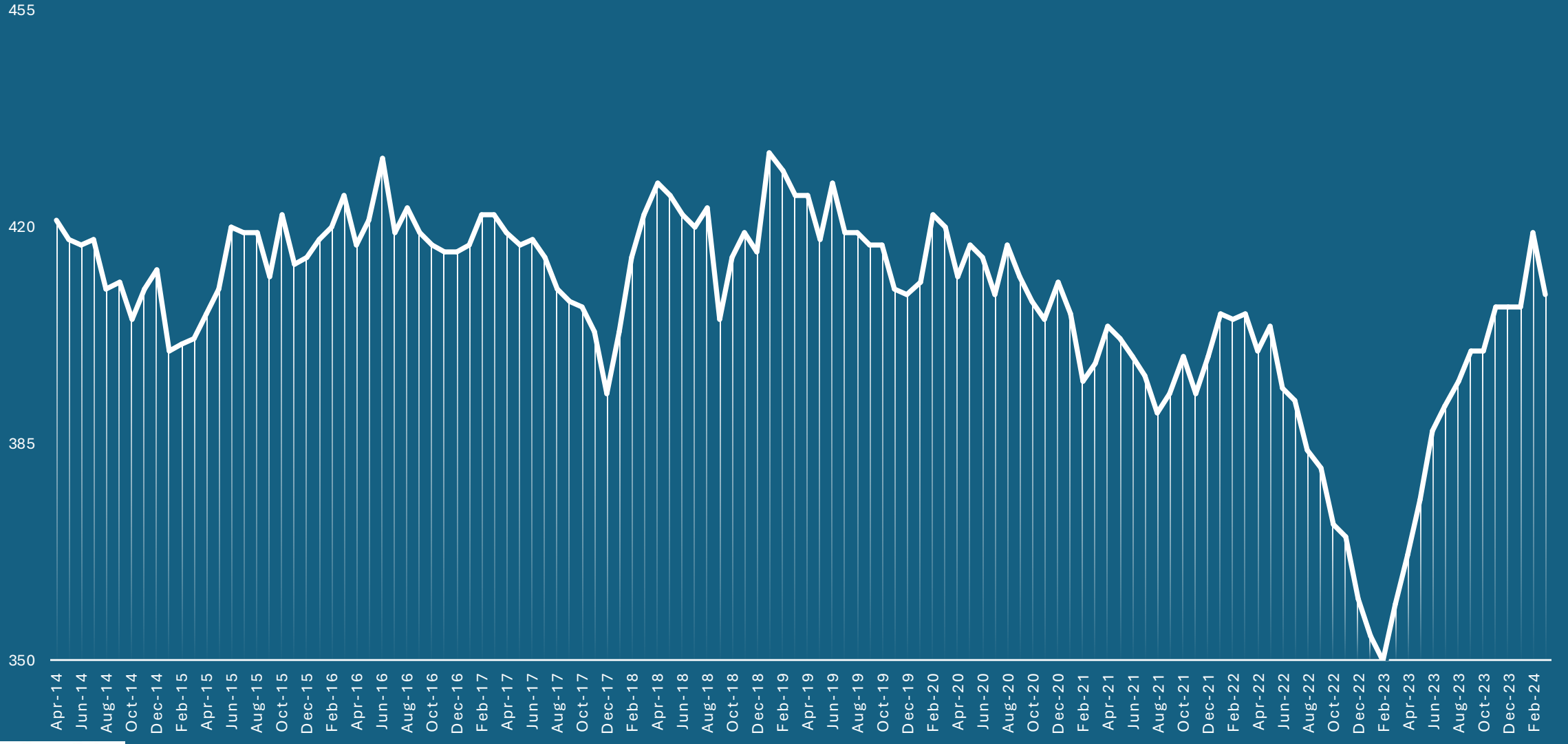


Rate of Looked After Children Per 1000 population age 0-17



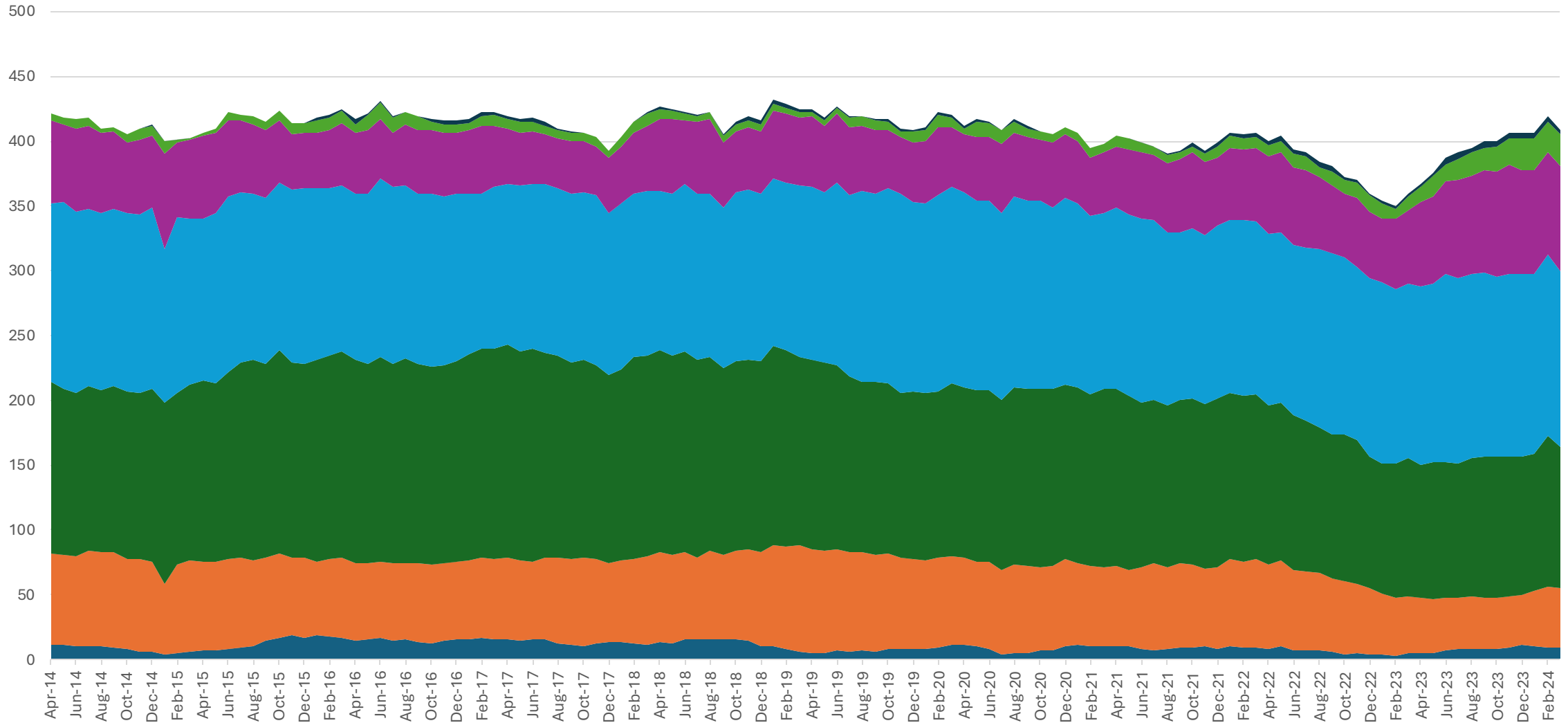


LOOKED AFTER CHILDREN 2014 - 24





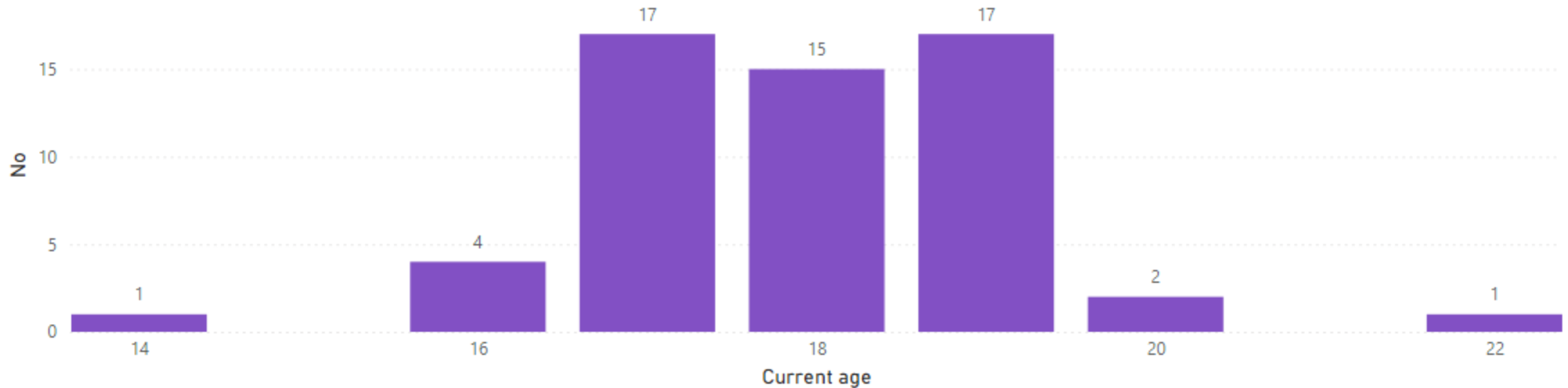
■ Under 1 ■ 1-4 ■ 5-11 ■ 12-15 ■ 16-17 ■ 18 ■ 19-21





Our Unaccompanied Asylum-Seeking Children and Young People

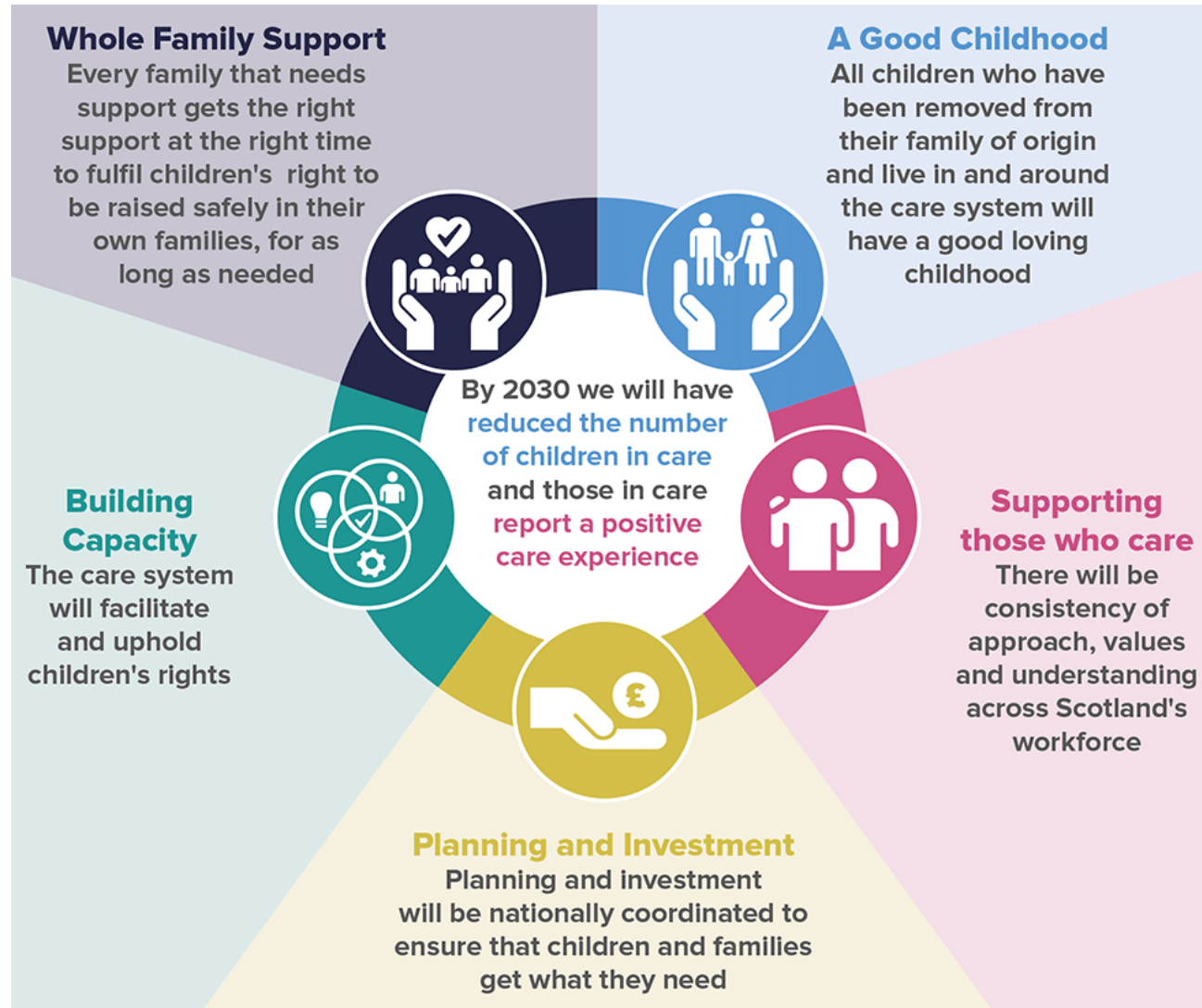
No of UASC by Current age





Comparator Data

	In the community				In residential accommodation		
	At home with parents	With friends / relatives	With foster carers provided by LA	With foster carers purchased by LA	In other community	In local authority home/ Voluntary Home	In other residential care
Aberdeenshire	12%	18%	28%	12%	10%	10%	9%
Comparator LAs	17%	38%	24%	6%	5%	4%	7%
Scotland Average	20%	34%	22%	10%	3%	5%	5%



Living in Aberdeenshire

- Challenge of a rural authority – poverty
- Whole Family Wellbeing hubs
- Unaccompanied asylum-seeking young people
- Recruitment and retention issues of staff across services



Useful Links

- [Our Children & Young People's Services Plan \(girfec-aberdeenshire.org\)](http://girfec-aberdeenshire.org)
- [Aberdeenshire-Joint-Strategic-Needs-Assessment-JSNA.pdf \(girfec-aberdeenshire.org\)](#)
- [The Promise – Corporate Parenting \(girfec-aberdeenshire.org\)](http://girfec-aberdeenshire.org)
- <https://www.careinspectorate.com/images/documents/6964/Aberdeenshire%20joint%20inspection%20children%20at%20risk%20of%20harm.pdf>
- [Young People's Organising and Campaigning group - Aberdeenshire Council](#)